



MONTHLY MEMBERSHIP PROGRESS REPORT

District 321B1

Results as of: 06/30/2018

GMT: ANIL TULSYAN

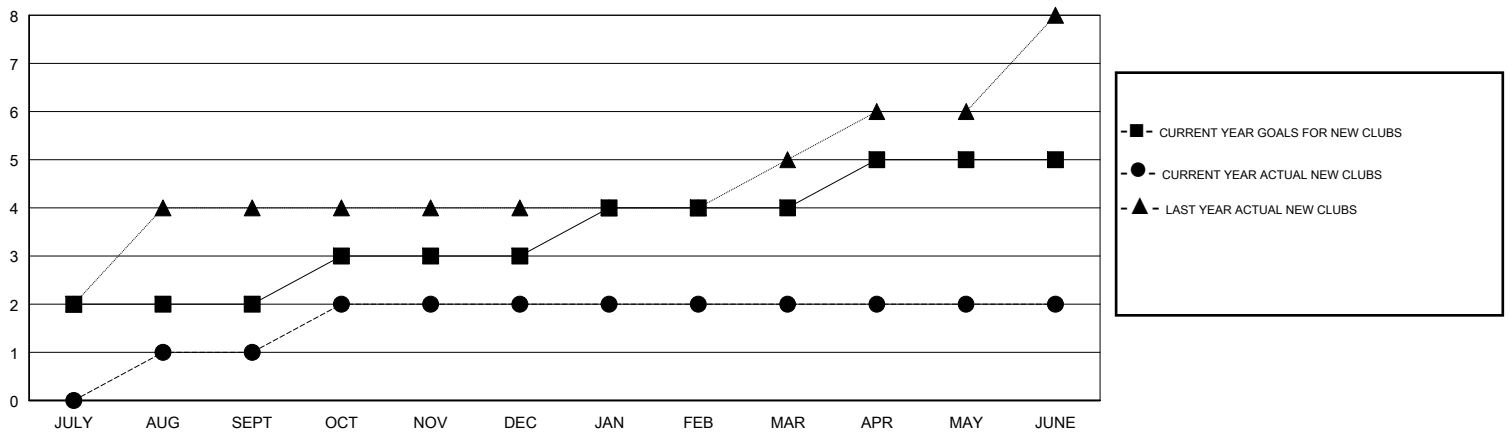
LOCATION INDIA

GMT CA

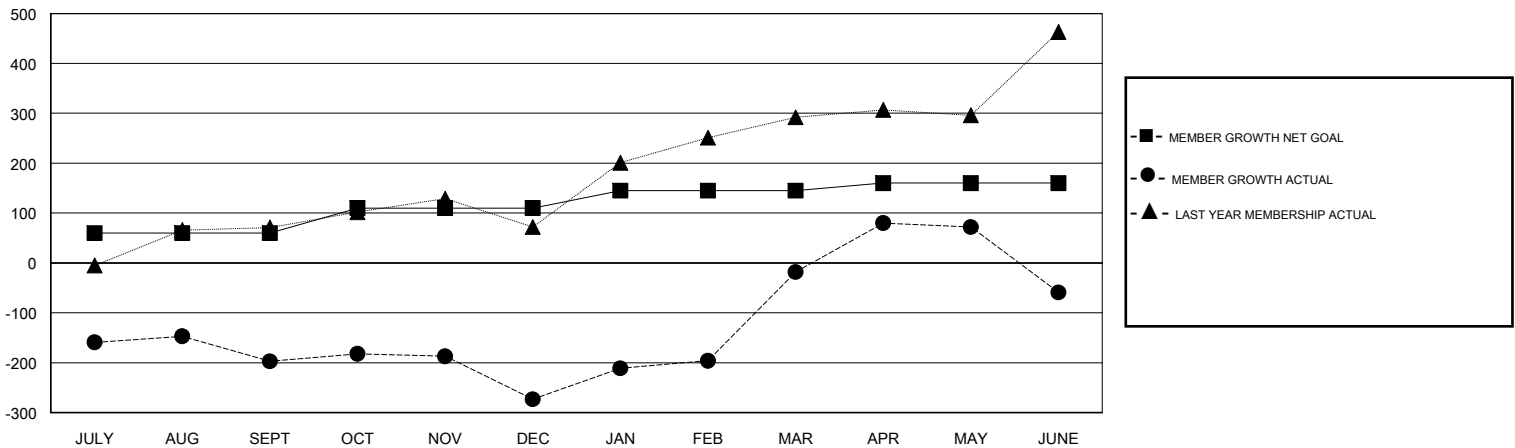
Clubs			
RESULTS FOR 2017-2018			
QUARTER	NEW CLUB GOAL	NEW CLUBS	DROPPED CLUBS
JULY/AUG/SEPT	2	1	0
OCT/NOV/DEC	1	1	5
JAN/FEB/MAR	1	0	0
APR/MAY/JUNE	1	0	0

Members			
RESULTS FOR 2017-2018			
QUARTER	MEMBER GROWTH NET GOAL	MEMBER GROWTH ACTUAL	DROPPED MEMBERS ACTUAL (including transfers)
JULY/AUG/SEPT	60	52	243
OCT/NOV/DEC	50	68	126
JAN/FEB/MAR	35	342	15
APR/MAY/JUNE	15	236	263

GOALS AND ACTUAL NEW CLUBS CUMULATIVE



GOALS AND ACTUAL MEMBERS CUMULATIVE



DROPPED CLUBS: 5	62 CLUBS OF 87 ADDED 1 OR MORE NEW MEMBERS CLICK HERE FOR CUMULATIVE MEMBERSHIP DATA	GENDER DISTRIBUTION	
		MALE 1,645 (58.00%) FEMALE 1,191 (42.00%) Women Percentage Fiscal Year Goal: 40%	TOTAL FAMILY UNIT MEMBERS 0 FAMILY MEMBERS PAYING HALF DUES 0
DROPPED MEMBERS			
DECEASED 8 CLUB CANCELLED 83 OTHER 556 TOTAL 647			